

**BlackBerry Bold™**

**Start Here**

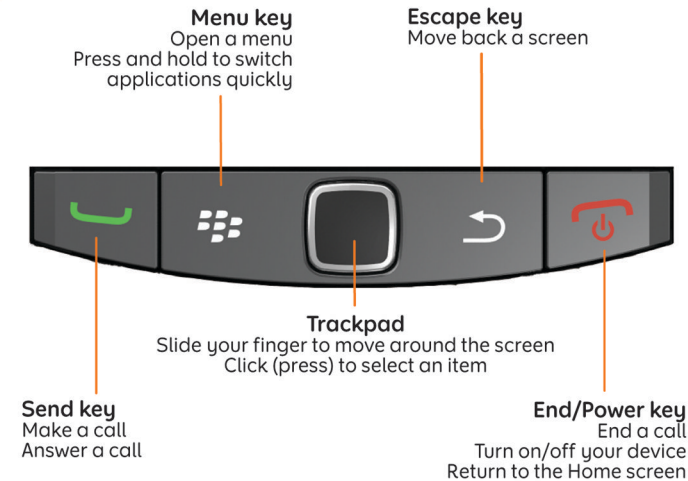
BlackBerry Bold 9780 Smartphone

## Welcome to BlackBerry!

Get to know your new BlackBerry® Bold™ smartphone.



## Explore the keys



©2010 Research In Motion Limited. All rights reserved. BlackBerry®, RIM®, Research In Motion®, SureType®, SurePress™ and related trademarks, names and logos are the property of Research In Motion Limited and are registered and/or used in the U.S. and countries around the world. Mac is a trademark of Apple Inc. Bluetooth is a trademark of Bluetooth SIG. Hotmail, Windows, Windows Live, and Windows Mobile are trademarks of Microsoft Corporation. Palm is a trademark of Palm Trademark Holding Company, LLC. Wi-Fi and Wi-Fi Protected Setup are trademarks of the Wi-Fi Alliance. The Facebook icon is a trademark of Facebook, Inc. The Twitter logo is a trademark of Twitter, Inc. The WeatherEye logo is a trademark of The Weather Network. All other trademarks are the property of their respective owners. This documentation is provided "as is" and without condition, endorsement, guarantee, representation or warranty, or liability of any kind by Research In Motion Limited and its affiliated companies, all of which are expressly disclaimed to the maximum extent permitted by applicable law in your jurisdiction.

MAT-33634-001 | PRINTSPEC-089 | SWD -1137653-0831022050-001 | RCM72UW/RCM73UW

**BlackBerry.**

## Safety information

IT IS IMPORTANT THAT YOU READ THE SAFETY AND PRODUCT INFORMATION BOOKLET (INCLUDED) PRIOR TO USING YOUR BLACKBERRY® DEVICE. It contains essential safety information related to your device.

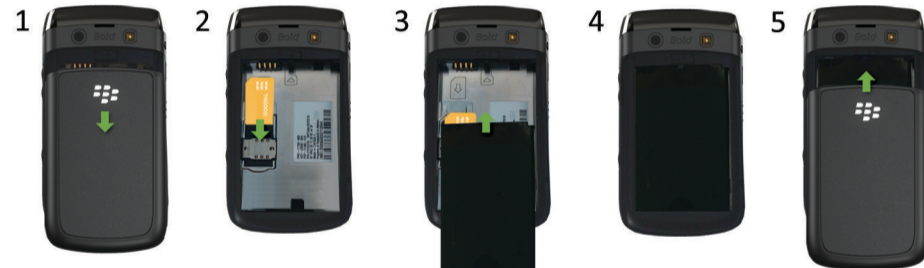
**More tips, interactive demos, and videos are online!**

For more info, go to [www.blackberry.com/gettingstarted](http://www.blackberry.com/gettingstarted).

1


## Insert the SIM card and battery

Depending on your BlackBerry® device model or your wireless service provider, you might not need to insert a SIM card to use your device.



2

## Charge the battery

If your BlackBerry® device does not turn on automatically, charge the battery or press and hold the  key.



Chargers might vary by region.

 full battery power

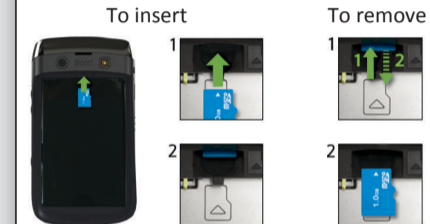
 battery charging

 low battery power

3

## Insert a media card

You can use a media card to store more media files. A media card might already be in your BlackBerry® device.



To remove the media card, press the media card in and then pull it out.

To see a video, on the Home screen, click the **Setup** icon and see the **Help & Tutorials** section.

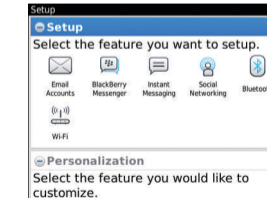
4

## Set up your device

Get started quickly with Setup!

Setup should appear automatically, but if it doesn't, on the Home screen, click the **Setup** icon.

- Set up email addresses and social networking accounts
- Personalize your BlackBerry® device
- Learn about typing and important keys
- Set up wireless and Bluetooth® connections



## Set up your email

- If you're in Setup already, click the **Email Accounts** icon. If you aren't in Setup, on the Home screen, click the **Setup** icon > **Email Accounts** icon.
- Follow the screens to set up your email address. When your email address is set up correctly, you receive a confirmation message. To see your email, on the Home screen, click the **Messages** icon.

**Note:** In some cases, you might see the following options. If so, select one of the options.

- Internet Mail Account:** Use this option to associate your BlackBerry® device with one or more existing email accounts (for example, Windows Live™ Hotmail®) or to create a new email address for your device.
- Enterprise Account:** If your administrator gave you an enterprise activation password, use this option to associate your device with your work email account using the BlackBerry® Enterprise Server.

If you are trying to set up an Internet email account (for example, Windows Live™ Hotmail®) or a new email address for your device, and do not see this option, contact your administrator or wireless service provider.

## Need help setting up your email?

- On the Home screen, click the **Setup** icon. On the **Email Accounts** screen, verify that your email address information is correct.
- Verify with your wireless service provider that your email account type is supported.
- Verify that you have switched devices correctly.

For more info about setting up an email address, go to [www.blackberry.com/docs/smartphones](http://www.blackberry.com/docs/smartphones) and click the link below **Email Setup**.

## Switch devices

To switch from a BlackBerry® device that has an existing email address and to move your data to a new BlackBerry device, do the following:

- On your computer, open BlackBerry® Desktop Software 6.0. To get the latest software, go to [www.blackberry.com/desktopsoftware](http://www.blackberry.com/desktopsoftware).
- If you have a SIM card, put it into your new device.
- Connect your new device to your computer.
- In the dialog box that appears, click **Copy data and settings from another device** and follow the prompts.
- On your new device, on the **Setup** screen that appears, click the **Email Accounts** icon and follow the prompts. If you decline any of the prompts, email won't be sent to your new device. If you're selling or buying a previously owned BlackBerry device that operates on CDMA networks, contact your wireless service provider to switch devices.

To delete data from your previous device, in the BlackBerry Desktop Software, click the **Device** menu > **Delete data**.

## Navigation tips



Home screen












More icons on the Home screen


See more icons	On the trackpad, slide your finger down quickly
See more views	On the trackpad, slide your finger left or right quickly
Open the pop-up menu	Click and hold an application icon or item, such as a message

# Applications












Get started with some of these great applications.






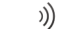








-  **Messages**  
Send emails, PIN messages, and more.
-  **Text Messages**  
Send text messages.
-  **Browser**  
Browse websites.
-  **Media**  
See saved pictures, play songs, and more.
-  **Camera (if supported)**  
Take pictures.
-  **Instant Messaging**  
Chat with friends or colleagues.

-  **Options**  
Set your device options. You can find more options in each application menu.
-  **Manage Connections**  
Set up wireless connections, such as a Bluetooth® connection.
-  **Help**  
Find answers here or click **Help** in a menu.

To show or hide an icon, highlight the icon using the trackpad. Press the  key > **Show All** or **Hide**.


# Status indicators

- Home screen**
-  new notification
  -  alarm set
  -  unopened message count
  -  BlackBerry® Messenger
  -  calendar reminder count
  -  social feeds
  -  missed call count
  -  sending or receiving data
  -  Wi-Fi® turned on
  -  roaming
  -  GPS turned on
- Messages**

-  unopened message
  -  text message
  -  opened message
  -  sent message
  -  attachment
  -  message is sending
  -  high priority
  -  message not sent
  -  draft message
  -  meeting invite
- Phone**
-  missed call
  -  received call
  -  placed call
  -  voice mail message

# Quick tips

- Typing**
- Insert a period Press the **space** key twice
  - Capitalize a letter Press and hold the letter key until the capitalized letter appears or press the **⇧aA** key and the letter key
  - Type a number or the alternate character on a key Press the **alt** key and the number key or character key (for example, to type the number one (1), press the **alt** key and **1W**)
  - Type a symbol Press the **sym** key
- Messages**
- Move to the top of the message inbox Press **T**
- Phone**



- Change the volume Press the **Volume** keys on the right side of your BlackBerry® device
  - Mute a call Press the  key on the top of your device
- Pictures**
- Zoom in to a picture Click the trackpad

For more tips, on the Home screen, click the **Setup** icon and see the **Help & Tutorials** section.

**Important:** When you use your device, take frequent breaks. If you experience discomfort in any part of your body, stop using your device immediately. If the discomfort persists, consult a physician.

## Send an email






1. On the Home screen, click the **Messages** icon.
2. Press the  key > **Compose Email**.
3. In the **To** field, type an email address.
4. Type a message.
5. Press the  key > **Send**.

## BlackBerry Messenger




Stay connected with friends or colleagues who have a BlackBerry® device! Send instant messages, update your status, and create groups so that you can share pictures, appointments, and more with family and friends.

## Change your ring tone

1. From the Home screen, press the  key.
2. Press the  key > **Phone Ring Tones**.
3. In the **Ring Tone** field, click a preloaded ring tone or click **All Music** or **All Alerts**.
4. Press the  key > **Save**.

## Download a ring tone

1. On the Home screen, click the **Media** icon > **Ring Tones** icon.
2. Press the  key > **Download Ring Tones**.

Additional data charges might apply. For information, contact your wireless service provider. If this feature is not available, you can download ring tones from other web sites.

## Pair with a Bluetooth enabled device





You must pair your BlackBerry® device with the Bluetooth® enabled device before you can connect to it. For information about preparing a Bluetooth enabled device for pairing, see the instructions for that device.

1. On the Home screen, click the connections area at the top of the screen, or click the **Manage Connections** icon.
2. In the Setup, Services, and Options section, click **Bluetooth Connections**.
3. If necessary, change the **Bluetooth** field to **On**.
4. Click **Add New Device** > **Search**.
5. Click the Bluetooth enabled device.
6. If necessary, do one of the following:
  - If the Bluetooth enabled device doesn't have a keyboard, on your BlackBerry device, type the pairing passkey found in the instructions for your Bluetooth enabled device.
  - If the Bluetooth enabled device has a keyboard, type a pairing passkey of your own choosing on both devices.

## Browse websites



Depending on your wireless service provider, your BlackBerry® device might have multiple browsers. For information about the fees associated with each browser, contact your wireless service provider.

1. On the Home screen, click the **Browser** icon.
2. Type a web address. If an address bar doesn't appear, press the  key > **Go To**.
3. Press the  key, or click the trackpad.

## Tabbed browsing

With the new tabbed browsing feature, you can easily switch between websites that you have open. For more info, on the Home screen, click the **Help** icon and search for tabbed browsing.

## Take a picture



1. On the Home screen, click the **Camera** icon.
2. To zoom in to or out from a subject, slide your finger up or down on the trackpad.
3. Click the trackpad.




## Record a video



1. On the Home screen, click the **Media** icon > **Video Camera** icon.
2. Click the trackpad.
3. To pause recording, click the trackpad again.

Depending on your BlackBerry® device model, the camera or video camera might not be supported or some camera or video camera features might not be available.

## Change your wallpaper


1. From the Home screen, press the  key.
2. Click **Options > Change Wallpaper**.
  - To take a picture, click **Camera**. Click the **camera** icon.
  - To use an existing picture, click a category. Click a picture.
3. Press the  key > **Set As Wallpaper**.
4. Press the  key to return to the Home screen.

## Connect using Wi-Fi

1. On the Home screen, click the connections area at the top of the screen, or click the **Manage Connections** icon.
2. In the Setup, Services, and Options section, click **Set Up Wi-Fi Network**.
3. If prompted, click **Turn on Wi-Fi**.
4. If you want to connect to a public hotspot or Wi-Fi® network that does not require a password, select the **Show Open networks only** check box.
5. Click the Wi-Fi network that you want to connect to.

## Download apps and themes

You can download applications, themes, and ring tones from your wireless service provider's web site (if available) or from the BlackBerry App World™ storefront.

1. To download a theme, on the Home screen, click the **Options** icon.
2. Click **Display > Screen Display**.
3. Press the  key > **Download Themes**.

Your wireless service provider might not support this feature. Additional data charges might apply. For information, contact your wireless service provider.



## Connect to your computer

You can use BlackBerry® Desktop Software 6.0 to back up and restore BlackBerry device data and sync calendar appointments, music, pictures, and more between your device and computer.



To download the BlackBerry Desktop Software, go to [www.blackberry.com/desktopsoftware](http://www.blackberry.com/desktopsoftware).

## Sync your media files

1. Connect your BlackBerry® device to your computer.
2. On your computer, open the BlackBerry® Desktop Software.
  - If you're using a Windows® computer, click **Music, Pictures, or Videos**.
  - If you're using a Mac computer, in the **Media** section in the left pane, click **Music**. Mac users can sync only music.

For more info, see the Help in the BlackBerry Desktop Software.

## Need more help?

- [www.blackberry.com/gettingstarted](http://www.blackberry.com/gettingstarted): Find getting started information.
- **Your wireless service provider's web site**: Find information about your wireless network or wireless service plan.
- [www.blackberry.com/go/declarationofconformity](http://www.blackberry.com/go/declarationofconformity): View the Declaration of Conformity made under Directive 1999/5/EC (HG nr.88/2003).

**CAUTION:** Use only those accessories approved by Research In Motion. Using any accessories not approved by RIM for use with this particular device model might invalidate any approval or warranty applicable to the device, might result in the non-operation of the device, and might be dangerous.